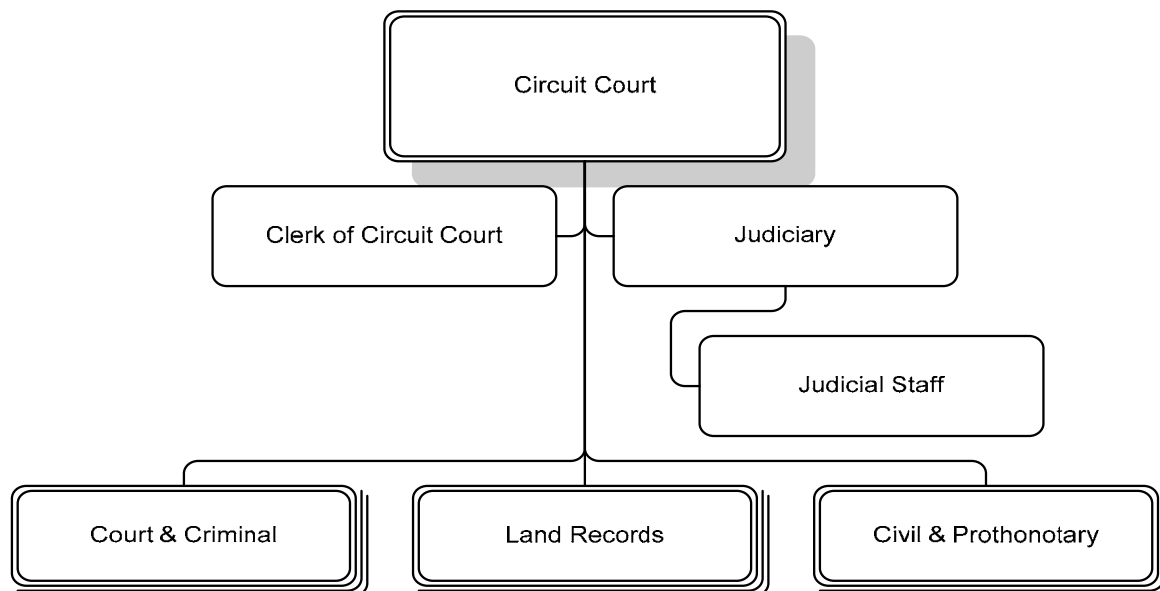


*Our Mission: To administer justice in a fair, timely and efficient manner*

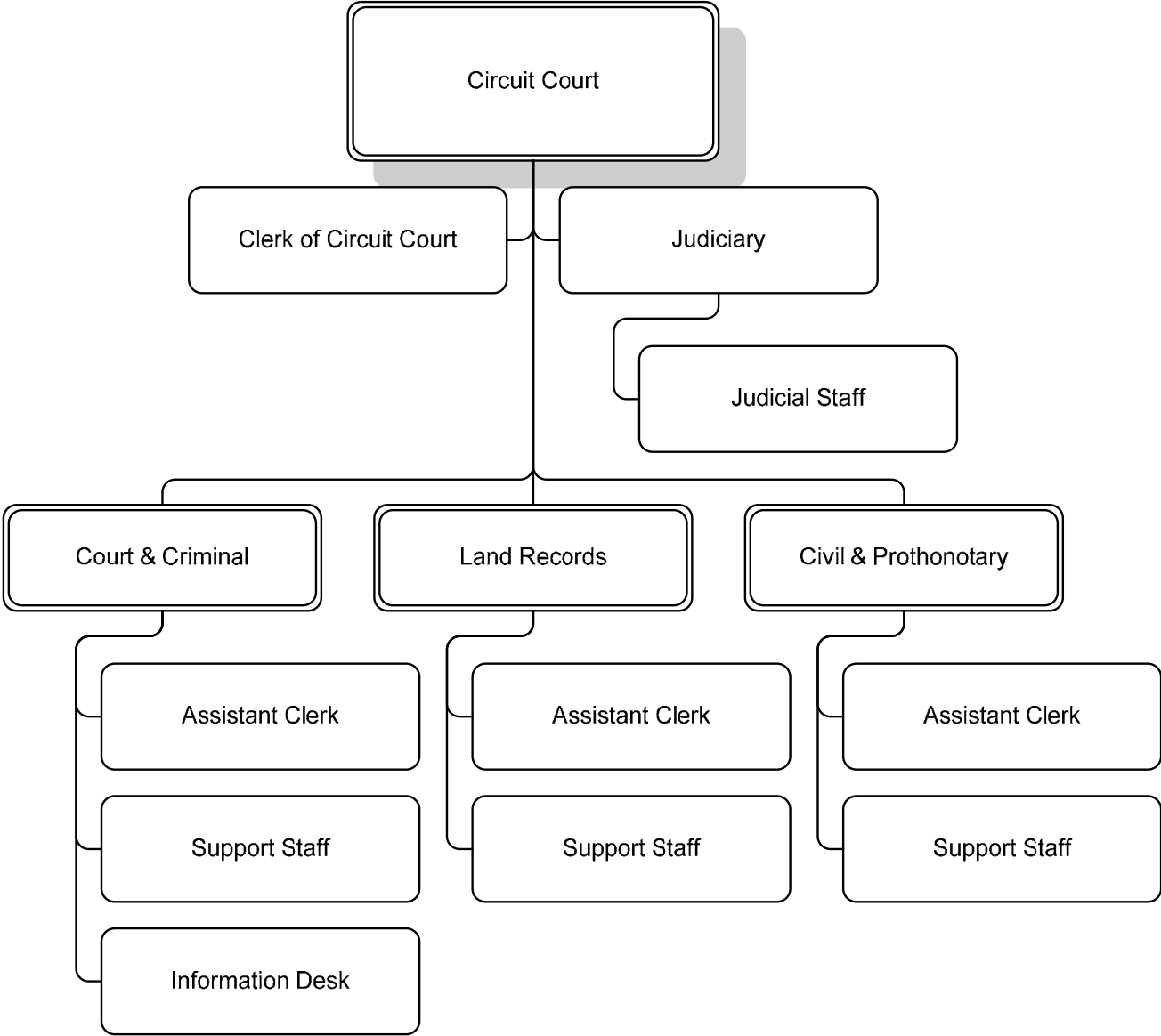
The Circuit Court is the trial court of general jurisdiction, and the highest court in the County for both civil and criminal cases. The Circuit Court, which is comprised of the Judges' Office and the Clerk's Office, also has appellate jurisdiction over all cases from the General District Court and from the Juvenile and Domestic Relations District Court.

- The Judges' Office (\$408,739, 5.0 FTEs): In civil cases, the Circuit Court has concurrent jurisdiction with the General District Court concerning claims from \$3,000 to \$15,000, and exclusive original jurisdiction over claims exceeding \$15,000. The Circuit Court also has jurisdiction over all equity (chancery) matters. These court matters include divorce cases, disputes concerning wills and estates, and disputes involving property.
- In criminal cases, the Circuit Court has jurisdiction over the trial of all felonies (offenses that may be punished by commitment to the state penitentiary) and those misdemeanors (offenses carrying a penalty of not more than 12 months in jail) originally charged in Circuit Court. The Circuit Court also has jurisdiction over juveniles aged 15 years and older who are charged with felonies and whose cases have been certified by a Judge of the Juvenile and Domestic Relations District Court for trial in Circuit Court.
- The Clerk's Office (\$2,389,724, 28.8 FTEs): The Clerk is the administrator of the Court and custodian of all court records. All suits are filed with the Clerk, and the proper taxes and fees are assessed.

**DEPARTMENT DIVISIONS**



DEPARTMENTAL ORGANIZATION CHART



## FY 2007 PRIORITIES

The FY 2007 priorities of the Circuit Court are:

- To continue to automate and maintain the recording, preservation and information retrieval systems using electronic scanning and other innovations to permit off-site information access first for land records, and ultimately for most court records.
- To continue to administer the Court's docket in an efficient and fair manner.

## DEPARTMENT FINANCIAL SUMMARY

	FY 2005 Actual	FY 2006 Adopted	FY 2007 Proposed	% Change '06 to '07
Personnel	\$2,051,990	\$2,191,833	\$2,304,418	5%
Non-Personnel	521,786	506,535	494,045	-2%
<b>Total Expenditures</b>	<b>2,573,776</b>	<b>2,698,368</b>	<b>2,798,463</b>	<b>4%</b>
Fees	9,452,510	8,967,313	9,606,648	7%
Grants	2,033,552	1,600,000	1,600,000	-
<b>Total Revenues</b>	<b>11,486,062</b>	<b>10,567,313</b>	<b>11,206,648</b>	<b>6%</b>
<b>Net Tax Support</b>	<b>(\$8,912,286)</b>	<b>(\$7,868,945)</b>	<b>(\$8,408,185)</b>	<b>-7%</b>
Authorized FTEs	33.8	33.8	33.8	
Funded FTEs	33.8	33.8	33.8	

## SIGNIFICANT BUDGET CHANGES

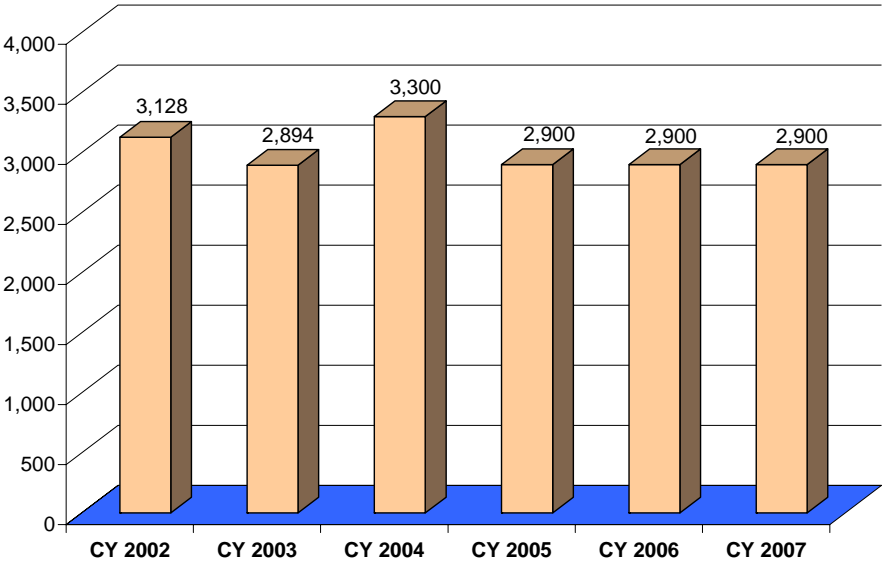
The FY 2007 proposed budget for the Circuit Court is \$2,798,463, a four percent increase over the FY 2006 adopted budget.

- ↑ The FY 2007 proposed budget reflects a two percent market pay line adjustment, a 10% increase in employer health insurance costs, and an increase in employer retirement contributions to maintain full funding of the retirement fund.
- ↓ Non-personnel expenditures decreased due to a drop in DTS telephone charges (\$12,490).
- ↑ Revenues increased mainly due to increases in Recordation Tax (\$326,703) and Court Fees (\$321,695), partially offset by a decrease in Falls Church reimbursements calculated based on prior year actual expenditures and the FY 2007 budget.
- Most functions performed by the Clerk carry a fee. A portion of that fee goes to the Clerk for salaries and expenses (for example the fee for a marriage license is \$30.00, \$10.00 of which is "Clerk's fee"). These fees fund the Compensation Board salary and expense budget for the office. Arlington is a big and busy office and collects fees in excess of expenditures. Two thirds of this amount is sent back to Arlington County by the state (by statute).

**PERFORMANCE MEASURES**

	CY 2002 Actual	CY 2003 Actual	CY 2004 Actual	CY 2005 Actual	CY 2006 Estimate	CY 2007 Estimate	CY 2007 Goal
Civil cases adjudicated	1,587	1,565	1,700	1,750	1,750	1,750	1,750
Civil cases jury days	82	70	80	70	70	70	70
Criminal cases adjudicated	3,128	2,894	3,300	2,900	2,900	2,900	2,900
Criminal cases jury days	132	100	130	110	110	110	110
Civil cases filed	1,727	2,226	1,953	2,750	2,750	2,750	2,750
Criminal cases filed	3,229	3,113	3,200	2,600	2,600	2,600	2,600
Deeds recorded	60,415	80,000	54,521	53,140	53,000	53,000	53,000

**Criminal Cases Adjudicated**



**Civil Cases Adjudicated**

