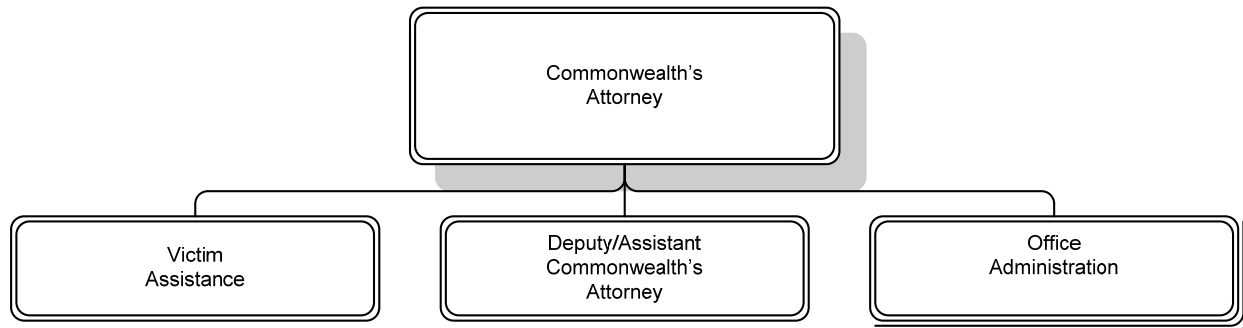


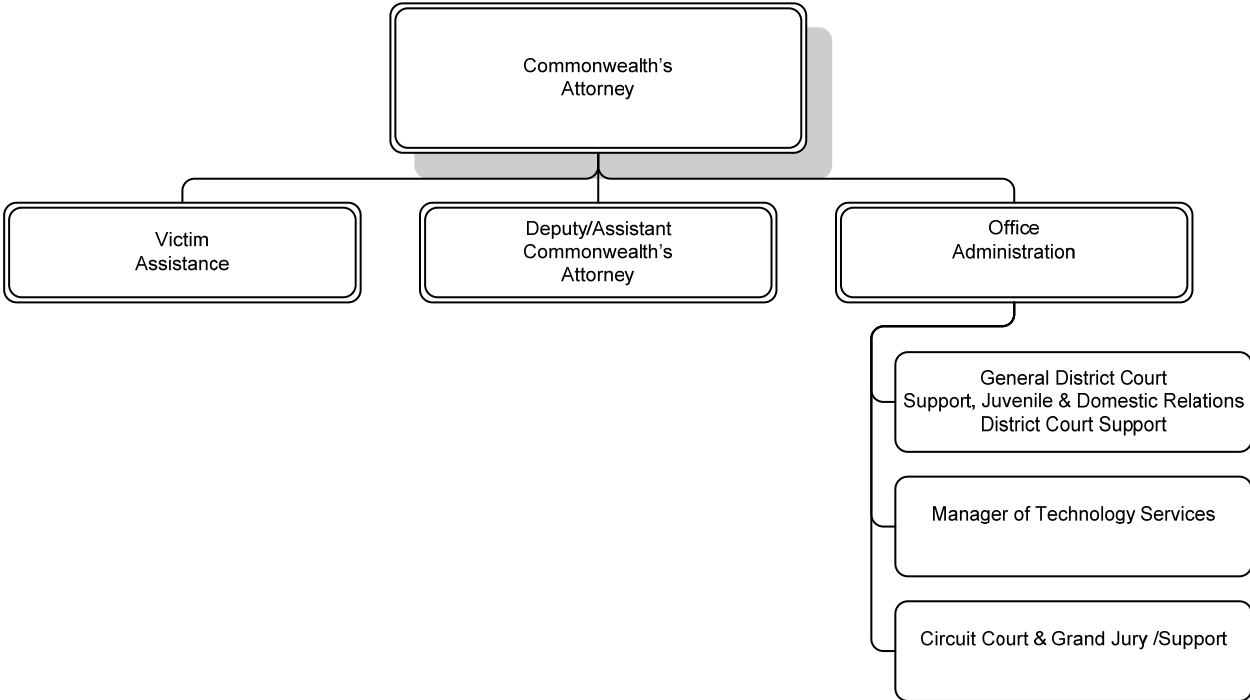
*Our Mission: "To see that the innocent go free and the guilty are convicted"*

The Commonwealth's Attorney, a Constitutional Officer for the Commonwealth of Virginia, is responsible for the prosecution of all criminal offenses occurring within Arlington County, Ronald Reagan Washington National Airport as well as felony offenses committed within the City of Falls Church. In addition, this function also entails the review of criminal complaints and the rendering of legal assistance to police officers. The Commonwealth's Attorney and Deputies assign and schedule all cases, as well as oversee their evaluation and preparation. The Commonwealth's Attorney, or his Assistants, appears in the General District Court, Juvenile and Domestic Relations District Court and the Circuit Court.

**DEPARTMENT DIVISIONS**



DEPARTMENTAL ORGANIZATION CHART



**FY 2008 PRIORITIES**

- To successfully prosecute offenders charged with committing violent crimes with particular emphasis on gang related violent crimes.
- To properly investigate allegations of serious criminal activity through the investigative grand jury.
- To continue to attack the problem of domestic violence through swift and effective prosecution and strong victim support services.
- To assure that the rights of crime victims are recognized and protected.

**DEPARTMENT FINANCIAL SUMMARY**

	FY 2006 Actual	FY 2007 Revised	FY 2008 Proposed	% Change '07 to '08
Personnel	\$3,045,381	\$3,475,403	\$3,553,753	2%
Non-Personnel	153,396	144,956	146,550	1%
<b>Total Expenditures</b>	<b>3,198,777</b>	<b>3,620,359</b>	<b>3,700,303</b>	<b>2%</b>
Fees	45,924	35,111	30,124	-14%
Grants	1,447,111	1,324,522	1,375,446	4%
<b>Total Revenues</b>	<b>1,493,035</b>	<b>1,359,633</b>	<b>1,405,570</b>	<b>3%</b>
<b>Net Tax Support</b>	<b>\$1,705,742</b>	<b>\$2,260,726</b>	<b>\$2,294,733</b>	<b>2%</b>
Authorized FTEs	40.0	40.0	40.0	
Funded FTEs	40.0	40.0	40.0	

**SIGNIFICANT BUDGET CHANGES**

The FY 2008 proposed budget for the Commonwealth's Attorney is \$3,700,303, a two percent increase over the FY 2007 revised budget.

- ↑ Personnel expenditures include normal salary increases, an increase in employer retirement contributions to maintain full funding of the retirement fund and a 15 percent increase in employer health insurance.
- ↑ Increase in non-personnel is due to an increase in auto charges (\$1,590).
- ↓ Decrease in fee revenues is due to lower Falls Church projections (\$4,987) based on reconciliation with FY 2006 actual Falls Church payments and the corresponding expenditures.
- ↑ Increase in grant revenues is due to a four percent increase in Compensation Board salaries effective December, 2006 (\$42,299) and additional funding for the High Intensity Drug Trafficking Area (HIDTA) grant (\$7,852).

**PERFORMANCE MEASURES**

Critical Measures	FY 2003 Actual	FY 2004 Actual	FY 2005 Actual	FY 2006 Actual	FY 2007 Estimate	FY 2008 Estimate	FY 2008 Goal
Number of indictments terminated without adjudication	52	107	83	80	85	75	70
Number of felony guilty pleas	751	995	1,238	1,124	1,200	1,200	1,200
Number of "No True Bills" (grand jury does not issue indictments)	1	2	4	4	3	5	0
Percent of victims sent information on basic rights and program service	N/A	61%	59%	60%	66%	66%	70%
Percent of qualifying victims receiving direct services	N/A	39%	41%	41%	40%	40%	40%
Circuit Court: Indictments	1,550	1,618	1,345	1,294	1,300	1,300	1,300
Circuit Court: Misdemeanor appeals	206	223	356	262	300	300	300
Circuit Court: Sentencings	1,069	1,134	788	817	950	950	1,000
Circuit Court: Probation revocation	1,723	1,010	1,130	1,333	1,100	1,200	1,200
General District Court: Criminal Cases	5,715	6,783	7,023	6,387	6,800	6,800	7,000
General District Court: Traffic Cases	65,637	78,550	76,013	62,373	70,000	68,000	68,000
Juvenile and Domestic Relations District Court: Juvenile Cases	1,599	1,662	1,486	1,523	1,500	1,500	1,500
Juvenile and Domestic Relations District Court: Adult Misdemeanors	528	500	447	446	500	500	500
Juvenile and Domestic Relations District Court: Adult Felonies	86	90	81	104	100	100	100